

A SPECIAL REPORT ON THE FENG SHUI OF PINNACLE@DUXTON

PROSPER TIMES

JANUARY 1, 2010 /// PROSPERTIMES
WWW.PROSPERWITHFENGSHUI.COM /// COMPLIMENTARY COPY NOT FOR SALE

Pinnacle@Duxton

1 Cantonment Road Singapore 080001

**THE SHAPE
OF THE
7 TOWERS**

**FENG SHUI
CONSIDERATIONS
OF PINNACLE**

**The Estate's
Flying Star
Birth Chart**



ISSN 2010-0965

Written by MASTER LIM ENG CHEONG

Pinnacle@Duxton The Feng Shui of

A Winning Architectural Design that marks a Historic Milestone

A couple of days ago, proud owners of Pinnacle@Duxton started to collect their keys to their prized possession.

I share their excitement and I can't help but to feel elated about this historic milestone in Singapore's housing development, the highest public apartments ever built by the Housing Development Board (HDB).

Pinnacle@Duxton has reinvented public housing in Singapore and given it a new and refreshing outlook.

I'm fortunate to be one of the first Feng Shui practitioners to perform an audit on one of the newly released units on 19 Dec 2009. This has motivated me to write a short article and give my readers an insight to the Feng Shui considerations of this towering estate in the southern part of Singapore.



The majestic facade that stands right before us today is a winning design by ARC Studio Architecture & Co. during the Duxton Plain Public Housing International Architecture Design Competition, which was launched in August 2001.

Given a set of challenging parameters to work with, credit must be awarded to the architects, who strategically and innovatively introduced more than 1800 units to this small plot of land (2.5 hectares). The result, the city has come alive with sky houses that are notably connected by sky gardens with communal open spaces.

The Pinnacle@Duxton is located on the fringe of the Singapore's Central Business District (CBD). It comprises of seven 50-storey towers, with the longest aspect of the site along Cantonment Road facing west.

According to the architects, these towers have been orientated so as to provide as much air and light penetration throughout the entire site as possible, provide as much unobstructed views as possible, provide as little block-to-block facing as possible, as little western-facing blocks as possible and be as open as possible.

The eventual outcome is the meandering positioning of the 7 blocks that, in my opinion, resembles the shape of an agriculture sickle (镰刀).

The façade is inspired by the sense of flowing DNA sequencing with small bits of data that are strung together. Personally, I feel that it somewhat resembles ancient Chinese bamboo book strips (竹筒 / 竹帛) held together by threads, which in this case, are the sky gardens.

BIRD'S EYE VIEW

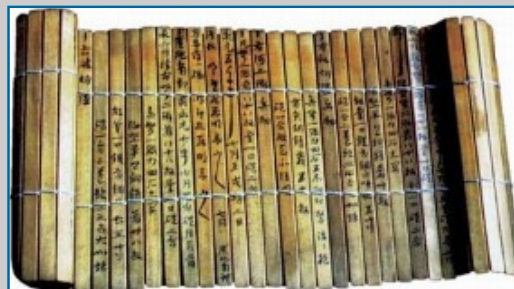
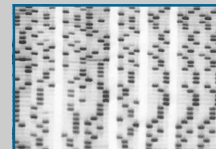
7 BLOCKS OF PINNACLE@DUXTON

RESEMBLES THE SHAPE OF AN AGRICULTURE SICKLE (镰刀)



STREET VIEW

THE TOWERS SOMEWHAT RESEMBLES ANCIENT CHINESE BAMBOO BOOK STRIPS HELD TOGETHER BY THREADS, WHICH IN PINNACLE'S CASE, ARE SKY GARDENS



↑ The façade is inspired by flowing DNA sequencing

So what about the Feng Shui considerations of this hyped up HDB housing project?

Earlier I have mentioned that the meandering positioning of the 7 blocks resembles a farmer's sickle (from the top view).

A sickle is a tool used to harvest the crops. Harvest is a sign of joy and abundance.



“HARVEST IS A SIGN OF JOY & ABUNDANCE.”

I hope the residents of Pinnacle@Duxton will be able to harvest the fruits of their labour in many years to come.

It would be better if the “sickle” is oriented to face and embrace the business district instead of Everton Park, as it would symbolise “harvesting” and “embracing” the prosperity of the financial hub.

From the front view, Pinnacle@Duxton also resembles ancient Chinese bamboo strips strung together to form book scrolls in the olden days. This symbolises continuing learning in our knowledge-based economy and should serve as a reminder to ourselves to upgrade our skills constantly or risk being irrelevant in our fast-paced society.



Standing in the center of the communal open space that is surrounded by Block A to E, I can appreciate the airiness and brightness at the estate. This is definitely a plus point as we do not want to live in an area where the air is stale and stagnant, and in an environment that is dark and damp. We want to live in an environment that is bright, airy and full of *Yang* energies (阳气).

The central communal open space also serves as a “breathing space” for the residents who have to cope with the pulsating heartbeat of our vibrant and dynamic metropolis.

Understanding the Flying Star Birth Chart of Pinnacle@Duxton

All seven blocks face different directions, which mean they also experience different energy influences of the environment. As they are completed in Year 2009/2010, according to *Xuan Kong Flying Star Feng Shui* (玄空飞星风水学), they are categorised as Age 8 buildings.

I have taken measurements at the site. If we were to take the entire estate as a collective unit, Pinnacle@Duxton is found to sit in the East and face the West direction.

I have also drafted the *Flying Star Birth Chart* of the estate for your reference:

NW	N				NE	
	5	2	1	6	3	4
	9		4		2	
	4	3	6	1	8	8
W	1		8		6	E
	9	7	2	5	7	9
SW	5		3		7	SE
	S					

The auspicious Star 8 arrives from the East, although we would have preferred them to be located in the front instead of the back of the estate.

We observe commercial buildings like the Amara Hotel and the Fuji Xerox Towers situated in the Southeastern part of the estate.

Further away in the Southeastern direction, the PSA Tanjong Pagar Terminal, one of the busiest ports in the world, is located there. Busy port activities in the Southeast direction have positive wealth effects on the estate.

Located in the Southwestern direction are the Cantonment Towers. They symbolise “virtual mountains” that bring positive harmonious effects to the residents of the estate. With proper Feng Shui configurations, these positive energies can be harnessed and enhanced.



The drawbacks are in the South and Northwest where we see the commercial building, SouthPoint, and the Central Police Division HQ respectively.

The edges of these buildings will trigger the activation of the negative energies of Star 2 and 5 evident in the Southern and Northwestern directions as shown in the *Flying Star Birth Chart*. This configuration may result in causing undesirable health issues for the residents. However, by applying effective Feng Shui remedies and cures, these negative effects can be alleviated or even eliminated.

What I have presented is a general analysis of Pinnacle@Duxton. As each individual block faces a different direction and each individual unit has a

different orientation with varying staying occupants, a personalised and detailed Feng Shui audit by a professional practitioner is still required to see how we can harness the auspicious energies to our advantage and dissolve negative ones to avoid misfortune (趋吉避凶).

I hope this article allows my readers to gain an insight and acquire a basic appreciation of the Feng Shui considerations of the highest public housing apartments in Singapore, Pinnacle@Duxton.

I wish all my readers and residents of Pinnacle@Duxton good health, harmony, happiness and prosperity. May we Prosper with Feng Shui and may we strive and achieve the pinnacle in whatever we do. **P**

FENG SHUI AUDIT FOR A CONTEMPORARY HOME

BY MASTER LIM ENG CHEONG

CONTACT US TO MAKE AN APPOINTMENT NOW!



Phone: (65) 6775 1638

E-mail: enquiry@ProsperWithFengShui.com

Website: www.ProsperWithFengShui.com

BY APPOINTMENT ONLY

Professional Services Available:

- Feng Shui Audit 阳宅风水服务
- Destiny Analysis 个人八字分析
- Select Auspicious Dates 看八字择吉日
- Select Auspicious Location 吉祥地点选择
- Select Auspicious Number 吉祥号码选择
- Select Auspicious Logo 标志设计选择
- Courses & Seminars 玄学课程论坛

About CHANG Consultancy 永昌風水



CHANG Consultancy 永昌風水 is one of the leading Feng Shui and Ba Zi (八字) consulting firms in Singapore.

We take pride in providing practical, effective and yet contemporary Feng Shui solutions to our valued clients.

Master Lim Eng Cheong (林永昌), is best known for his application of Feng Shui techniques in a subtle yet contemporary and powerful way.

Delivering talks, seminars and courses on Chinese metaphysical studies is also one of our fortes. We deliver Feng Shui and Ba Zi talks, seminars and courses to corporations as well as to individuals who are keen to gain a deeper understanding into Chinese metaphysics and its applications.

Our professional approach to Ba Zi (八字) / Destiny analysis and Feng Shui consulting sets us apart from conventional practices and puts us in a foremost position to give a new meaning to harmonious and quality living.

Phone: (65) 6775 1638

E-mail: enquiry@ProsperWithFengShui.com

Website: www.ProsperWithFengShui.com

BY APPOINTMENT ONLY





PROSPERTIMES SPECIAL REPORT: FENG SHUI OF PINNACLE@DUXTON
Published on 1 January 2010
All information published in this article is copyrighted by CHANG Consultancy

No part of this article may be reproduced, or transmitted in any form or by any means, including photocopying and recording, without the written permission of CHANG Consultancy. Such written permission must also be obtained before any part of this article is stored in a retrieval system of any nature.

All efforts have been made to ensure high quality information and content in this article. CHANG Consultancy accepts no responsibility for any outcome resulting from unguided practice of any of the recommendations in this article. CHANG Consultancy accepts no liability of any kind for any losses or damages caused or alleged to be caused directly or indirectly from using the information contained in this article.